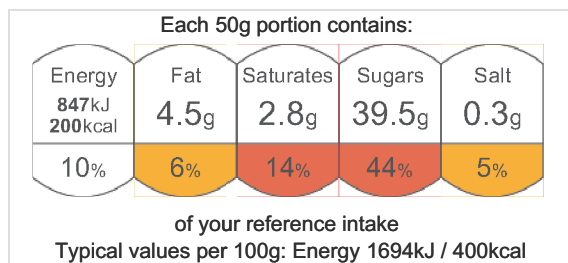


Chocolate Caramel & Seasalt Fudge

Graphics



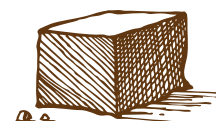
Typical Values

	per 100g	per 50 g serving
Main		
Energy	1693.9kJ	847.0kJ
Energy	400.2kcal	200.1kcal
Fat	9.0g	4.5g
of which saturates	5.6g	2.8g
Carbohydrate	82.4g	41.2g
of which sugars	79.1g	39.5g
Fibre	0.4g	0.2g
Protein	2.2g	1.1g
Salt	0.69g	0.34g
Sodium	270.8mg	135.4mg

Ingredient List

Sugar, Condensed Milk (**Milk**), Glucose, Butter (**Milk**), Syrup, Dark Chocolate (**Soya**), Dried Milk (**Milk**), Cocoa Powder, Glycerine, Caramel Flavouring, Salt.

For allergens, including cereals containing gluten, see ingredients in **bold**.



COTSWOLDFUDGE.CO.